

LEVEL BOOK

Malaysia

July 9 -

Aug. 8

1985



85

KL

2

2

5

L1

3

No	BW	Sex	TL	T	HB	HF	HF	E	
1.	198	♀ (-)	443	160W (HE)		23		19	K.P. #1 5/22/85
2	198	♂+	400	200	200	30.5	48	16.8	} <i>Callosciurus notatus</i> 11. Kelang, West of KL. from Hyydan 11/Jul. '85
3	115	♀ (int.)	342	176	166	29.5	47	17.3	
4	109	♂+	350	186	167	29	47	15.	
5	45	♂	219	74	145	13	19.5	11.5	Sungai Petani Doi Pak Pak Jul. 20 R. rajah (aurifer) Kaki Bukit Jul. 20 '85
6	161	♂+	282	90(T)	192	18	41	24	存生林 Testis + sept Tupaia glis Jul. 20 '85
7	118	♂+	347	171	176	23	41	15.5	存生林 test 11x5 sp
8	139	♀+	357	171	186	25	42.5	19.5	" " " " Jul. 20 '85 存生林 ut. 太 10mm
9	144	♀ last	368	180	188	15.5	36	22.5	R. rajah Sungai Paic (aurifer) Jul. 21 トガラシ大田周遊ゴケ林, 幼R2L1 mam. 2+0+2 develop.
10	36	♂- ^{imm}	232	116	116	13.5	28.5	17	R. tiomanicus " Jul 21 "
11	104	♀+	348	181	167	16	33.5	20	" " " " Jul 21 PSR2L3 mam. 2+0+3 develop.
12	9.2	♂+	252	100(T)	152	16	32	19	Singkir Jul 21 15+10周遊 test 22x13
13	121	♂+	385	206	180	17	39	24	R. rajah (aurifer) Jul. 21 "

No	BW	Sex	TL	T	HB	FP	H/	E		
✓ 14	179	♂+	326	122(+)	204	17	42	22	R. <u>rajah</u> <u>surifer</u>	Jul. 21 1st + 1st 围 围 已 下 芝 林 ep +
✓ 15	244	♂+	438	226	212	18.5	40.5	23.5	R. <u>rajah</u>	Jul. 22 water garden ep +
✓ 16	174	♂+	386	194	192	17	38.5	22.5	R. <u>rajah</u>	Jul. 22 " ep +
✓ 17	♂-	♂-	281	148	133	16.5	37.5	21	R. <u>rajah</u> (50) <u>surifer</u>	Jul. 22 Sungai Pau (Jeniang) ep +
✓ 18	173	♀+	341	140(+)	201	18	42	23	R. <u>surifer</u>	Jul. 23 Foot. R3 L3 " man 2 to + 2
19	?	♀	105cm	34cm	71mm	-	130mm	52mm	<i>Viverra zibethica</i> (Civet) Traffic accident	Jul. 24
✓ 20	242	♂+	466	248	248	24	50	21	R. <u>mulleri</u>	Jul. 24 Tupah 河 畔
✓ 21	197	♂+	409	202	207	17	38.5	21	R. <u>rattus</u>	"
✓ 22	117	♀+	353	172	181	15.5	36	21	R. <u>surifer</u>	" " PS R2 L2
✓ 23	210	♀+	394	183(+)	211	18	41	25	R. <u>surifer</u> ?	" Foot. R3 L5 FS R3 L4 Gunung Jerai
✓ 24	142	♀	336	147(+)	189	24	43	15	T. <u>glis</u>	" ut. undev. "

W	Sex	TL	T	HB	RF	HF	LB		
25	♂	121	353	168	185	26	44	16	T. glis Gunung Jerat Jul 24
26	♀	162	369	164	205	26	45	16	" Fact R1 L1 "
27	♂+	262	469	240	229	23	50	21	R. muelleri Tupah 11/17 Jul 25
28	♀+	183	437	227	210	21.5	46	20	R. muelleri "
29	♂+	116	361	178	183	17	41	23.5	R. surifer " "
30	♀+	104	349	172	177	16	34	20	R. thomanicus "
31	♀+	168	330	147	183	21	40	15.5	man 2+0+3 ¹ Fact R4 L4 T. glis "
32	♂-	185	422	214	208	21	46.5	20	man 0+2+0 ¹ Fact R2 L1 R. muelleri Jul 26 "
33	♀	214	377	172	205	29	47	18	C. notatus ^{sp-} " "
34	♂	96	328	160	168	26	43	14	man 0+1+1 ut- T. glis "
35	♂	46.5	188	51(+)	137	12	20	14	Suncus murinus Jul 26 Telok-Nipah, Pulau Sayak

	BW	Sex	TL	T	HB	FP	HF	E	T	
✓ 236	39	♀	205	69	136	12.5	19.5	14		<i>Suncus murinus</i> sai 家屋内 Jul 27
							Foet ROL1			
✓ 37	17	♂	159	58	103	11	17.5	11		" "
✓ 238	36	♀	190	61	129	12	18	12		" "
							Foet R3L2 mam devel.		水田	Bukit Marlam Jul 27
✓ 39	171	♂+	408	208	200	17	37	22		<i>R. rattus</i> 海濱果粒田 Foet Plan Sayak Jul 26
✓ 40	135	♀	340	156	184	25	42	15.5		<i>T. glis</i> " "
							Foet R1L1			" "
✓ 41	127	♂	332	150	182	25	43	17		<i>T. glis</i> " Jul 26
✓ 42	137	♂	352	162	190	24	43	17		<i>T. glis</i> " "
✓ 43	137	♂	360	164	196	27	45	16		<i>T. glis</i> " "
✓ 44	61	♀	309	109	140	16.5	36.5	20		<i>R. argentimenter</i> (<i>rattus</i>) Bukit Kecil Jul 27
✓ 45	112	♀	315	147(+)	168	17	37	21		<i>R. argentimenter</i> (<i>rattus</i>) Bukit Kecil mam 2+0+3 " "
✓ 46	110	♂+	349	173	176	16	38.5	21		<i>R. argentimenter</i> mam-3+1+2 Bukit Kecil 98.3%

	BW	Sex	TL	T	HB	PF	HP	E		
✓ 47	99	♂ (-)	324	161	16.3	26	44	14		<i>T. glis</i> Jul. 27 Tupah,
✓ 48	148	♂ (-)	349	148(4)	20.1	25.5	45	16		<i>T. glis</i> Tupah, Jul. 27
✓ 49	237	♂ (+)	489	258		25	53	20.5		<i>R. muelleri</i> Tupah, Jul. 27
✓ 50	116	♂ (-)	362	187		20	43	21		<i>R. muelleri</i> (59) Tupah, Jul. 27
✓ 51	152	♂ (-)	408	200	2.08	19	43	21		<i>R. argentiventer</i> Bukit Maritim Jul. 27 (5)
✓ 52	160	♂ (+)	293	100(+)	193	19	39	22		<i>R. argentiventer</i> ? Bukit Maritim Jul. 27 (5)
✓ 53	37	♀ -	234	118	116	15	32	16		sp? <i>R. rattus</i> ? <i>R. (rattus)</i> sp
✓ 54	166	♂ +	401	207	194	18	40	21		skin & <i>R. argentiventer</i> <i>(rattus)</i> <i>R. argentiventer</i> Bukit Maritim Jul. 27
✓ 55	106	♂ (-)	335	162	173	24	41	13		<i>T. glis</i> Bukit Maritim Jul. 27
✓ 56	99	♂ (-)	217	99		12.5	20	12		<i>Sivacus</i> Sungai Bisi Jul. 27 (5, 10)
✓ 57	174	♂ (+)	430	233	197	18	39	19		<i>R. rattus</i> Ganselang (Sungai Bisi) Jul 27

	BW	SD%	TL	T	HB	FP	HP	E	
✓ 58	135	♀(+)	385	211	18.4	18	39.5	22	R. rattus Gomelung (Sungai Padi)
✓ 59	122	♂(+)	346	181	16.5	16.5	35	20	man 2+0+3 Jul 28 R. Tiomanicus Gomelung (Sungai Padi)
✓ 60	110	♀(+)	276	112(+)	16.4	15	32	20	R. Tiomanicus Gomelung (Sungai Padi) (18.5 2)
✓ 61	30	♂(-)	222	113	10.9	13	30.5	20	R. aurifer (49) Gomelung (S.P.)
✓ 62	110	♀(+)	363	185	17.8	15.5	32.5	19	R. Tiomanicus Kampung Bukit Hilan Jul 29 (Kuala Pegang)
✓ 63	152	♂(+)	394	197	19.7	17	35	20	"
✓ 64	100	♀+	327	157	17.0	14.5	34	19	" sp+ "
✓ 65	106	♀+	281	103(+)	17.8	15	32	19.5	man 2+0+3 " "
✓ 66	78	♂-	311	155	15.6	15	3.3	18	man 2+0+3 " "
✓ 67	172	♂+	398	195	20.3	17	39	21	R. argentimulter Padan Tembusi Jul 30 (Sungai Paseo)
✓ 68	120	♂+	363	189	17.4	17	38.5	20	R. rattus " "

	BW	Sex	TL	T	HB	FF	HF	E	
✓ 69	203	♂+	426	217	209	19	40.5	22	R. rattus Padang Tembusan Jul. 30
✓ 70	158	♂+	369	183	186	12	36	20	2pt R. rattus "
✓ 71	136	♀+	341	168	173	15	32	20	1pt R. noronicensis Mudara MAB "
✓ 72	110	♂-	341	172		25	43	16	Foot R4 L0 T. glis Padang Tembusan "
✓ 73	166	♂+	370	171		25.5	43	17	T. glis "
✓ 74	168	♀+	344	162	182	25	42	15	T. glis " Foot R2 L1
✓ 75	130	♂-	344	153	191	24	47.5	15	T. glis "
(76)	120	♂-	350	171	179	25.5	43	16	T. glis "
✓ 77	124	♂-	335	160	175	23	43	15.5	T. glis "
✓ 78	117	♀+	345	173(♂)	172(♂)	16.5	37	22	R. rattus Batu Dua Jul. 31
✓ 79	102	♀+	328	161	167	16	34	20	R. argentiventer Batu Dua " } man 3+0+3

96.4%

BW Sep TL T HB PP HF E

✓	✓	80	110	♂+	339	165	174	16.5	36.5	19	R. argentiventer Batu Dua Jul 31
						94.8%					
✓	✓	81	116	♂+	364	190	174	17	39	20.5	R. rattus Bukit Mariani "
✓	✓	82	154	♀+	395	211	184	17.5	36.5	22	"
✓	✓	83	45	♂-	200	62		12.5	20	13	Suncus murinus "
✓	✓	84	410	♀+	535	278	257	23.5	60	24	R. mullersi Taman Negara (mamam-2+0+2) Kuala Tahan Aug 5
✓	✓	85	104	♂+	347	177	170	15.5	32.5	18	R. tiomanicus " sp+
✓	✓	86	106	♂+	319	163	156	15	32.5	18	R. tiomanicus " sp+
✓	✓	87	103	♀+	340	174	166	15	32.0	18	R. tiomanicus "
✓	✓	88	90	♂+	312	159	153	15	32.	18.5	R. tiomanicus " sp+
✓	✓	89	90	♀+	329	166	163	15	31.5	18	R. tiomanicus "
✓	✓	90	122	♂+	357	181	176	15.5	34	18	R. tiomanicus " sp+

	BW	SEX	TL	T	HB	FF	HF	E	
✓✓ 91	52	♀±	273	141	132	13.5	30	17	<i>A. tiomanicus</i> Taman Negara Kuala Takah Aug 5
✓✓ 92	215	♀	254	65(+)		28	46	18	<i>Lariscus insignis</i> " "
✓✓ 93	215	♂+	323	118		28	48	17.5	Fact R2 L0 " "
✓✓ 94	100	♂+	329	165	164	28	46	19	<i>Callosciurus caniceps</i> " "
✓✓ 95	417	♂+	583	291		26	54	23	<i>R. mulleri</i> Kuala Takah 37.12.71 Aug 5
✓✓ 96	402	♀+	544	287	257	22	48	22	" "
✓✓ 97	370	♀+	517	266	251	22	48	22	man develop. man 2+0+2 " "
✓✓ 98	56.5	♂-	282	151		16.5	36.5	18	man 2+0+2 " 37
✓✓ 99	226	♀+	350	124	226	18	41.5	23	<i>R. ovifera rajah</i> " "
✓✓ 100	47	♂-	260	132		18.5	34	19	<i>R. ovifera rajah</i> " "
✓✓ 101	61	♀-	287	150	137	13.5	31	17	<i>R. tiomanicus</i> " "

10.104 11

▶ 3.11 測定. 固定.

	BW	Sex	TL	T	HB	FF	HF	E		
✓ 102	24	♂ -	207	106	104	12	25	16	<i>R. tiomanicus</i> Kuala Takah	Aug 6
✓ 103	116	♂ +	338	166	172	15.5	32.5	20	<i>R. tiomanicus</i> " "	宿舎裏 "
✓ 104	120	♀ +	326	154	172	14	30	18.5	<i>R. tiomanicus</i> " "	河沿 Aug 7
✓ 105	71	♀ -	293	149	144	16	28	20	<i>R. muelleri</i> (20)	" "
✓ 106	82	♀ -	300	152.5	147.5	17	35.5	19	<i>R. muelleri</i> (20)	" "
✓ 107	66	♂ -	300	154	146	17	37	19	<i>R. muelleri</i> (20)	" "
✓ 108	92	♀ +	342	165	177	15	32.5	19.8	<i>R. tiomanicus</i> "	" "
✓ 109	120	♀ +	326	165	161	14	32.5	16	<i>R. tiomanicus</i> (Fast 20 " L. 3)	" "
✓ 110	90	♂ -	347	180	167	16.5	38.5	18.5	<i>R. muelleri</i> "	" "
111	} 雄 ♀ 2 死 L. 2 R. 0.									Aug 8
112	} 49 87 5.16 712 固定.									" "

	BW	SK	TL	T	HB	FF	HF	ET	T	ST	
✓ 113	179	♀ +	273	59(+)	214	17	41.5	23.5			<i>R. nigrid aurifer</i> Kuala Takah Aug 8
✓ 114	31	♀ -	236	115	121	12	25	16.5			<i>R. tiomanicus</i> (20) " "
✓ 115	70	♂ +	324	164	160	13	32	17			<i>R. tiomanicus</i> " "
✓ 116	87	♀ +	336	164	172	14	30	17			<i>R. tiomanicus</i> " "
✓ 117	116	♂ +	367	174	193	13	32.5	19			<i>R. tiomanicus</i> " "
✓ 118	114	♀ +	371	180	191	10	31	18.5			<i>R. tiomanicus</i> " "
✓ 119	97	♀ +	363	184	179	14	31	17.5			<i>R. tiomanicus</i> " "
✓ 120	80	♀ +	329	154	175	14	30	27			<i>R. tiomanicus</i> " "
✓ 121	18.5	♂ -	192	97	95	11	24	16			<i>R. tiomanicus</i> (20) " "
✓ 122	¹⁰⁰ 530	♂ +	585	297(+)	288	23	52	25			<i>R. malleti</i> " "
✓ 123	128	♂ -	364	171	193	23	46	11			<i>T. glis</i> " "

Kg. Pulau Sentulu

	BW	Sex	TL	T	HB	FF	HF	E		
✓ 124	194	♀ -	399	181	218	25	44	17		112. <i>Callosiurus</i> Kuala Tahan Aug 8
✓ 125	74	♀ -	304	145	159	14	30	19		<i>B. Tomasius</i> Ulu Kertan Aug 10 ↓ Kampung Pulau Sentulu
✓ 126	119	♂ +	354	164	190	14	32	19.5		"
✓ 127	130	♂ +	351	166	185	13.5	33	20		"
✓ 128 128	68	♂ -	307	151	156	13	31	19		"
✓ 129	84	♀ +	329	161	168	14	31	18		"
✓ 130	91	♂ +	353	164	189	14	32	19		"
✓ 131	79	♀ +	333	162	171	13	30	18		"
✓ 132	86	♂ +	321	159	162	13	30	18		"
✓ 133	98	♂ +	334	177	157	17	30	19		"
✓ 134	98	♀ +	327	159	170	13	30	19		"

	BN	SEX	TL	T	HB	FF	HF	E		
✓ 135	66	♀ ±	321	163	158	12	31	19		R. tromanicus Aug 10 Ulu Kelantan Kampung Pulau Sentulu
✓ 136	67	♀ -	303	144	159	10	29.5	17		"
✓ 137	76	♀ ±	323	161	162	16	36	21		R. (surifer)
✓ 138	115	♂ +	353	165	188	13	32	19		R. tromanicus
✓ 139	18	♀ -	206	101	105	9	23	16		" (27)
✓ 140	360	♂ +	552	290	262	20	48	23		R. muelleri
✓ 141	60.5	♂ -	294	142	152	12	30	17		R. tromanicus
✓ 142	76	♂	309	147	162	12	29	18		"
✓ 143	128	♂ +	339	155	184	11	30	20		" Aug 11
✓ 144	63	♂ +	283	134	149	13	29	19		"
✓ 145	115	♂ +	346	171	175	15	33	19		"

	BN	Sex	TL	T	HB	FF	HF	E	
✓	146	142	♂+	376	179	197	15	32	19
✓	147	127	♂+	355	168	187	14	31	19
✓	148	89	♀+	324	159	165	13	30	18
✓	149	109	♀+	343	158	185	13	30	19
✓	150	60	♂-	291	142	149	13	30	18
✓	151	44	♀-	260	121	129	12	27	17
✓	152	254	♀+	517	278	239	22	50	23
✓	153	59	♂+	256	113	143	12	27	19
✓	154	79	♂+	320	154	166	15	31	18
✓	155	76	♀-	314	155	159	20	42	12
✓	156	122	♀+	350	164	186	14	31	19

= 2x 1/2 1/2

R. *trionanicus* 48
 Ulu Kelantan 11
 Kg. Pulau Sentul

R. *trionanicus*
 Pasir Berangi

R. *trionanicus*
 Pasir Berangi

R. *trionanicus*

R. *trionanicus*

R. *muelleri*

R. *whitetaili*

R. *trionanicus*
 Kampung Pulat
 (Isip) Aug 12

T. *glis*
 Kampung Pulat
 (Isip)

R. *trionanicus*
 Kampung Pulat
 (Boat)

	BA	SEX	TL	T	HB	FF	HF	E.		
157	123	♂+	343	168	175	14	32	18		R. loomaxius Kg. Palani Sankala 13
158	113	♀-	246	120	126	12	28	17		" "
159	93	♀+	338	167	171	14	31	19		" "
160	124	♀+	343	169	174	14	31	19		" "
161	79	♂+	297	142	154	14	30	17		" "
162	108	♀+	346	165	181	13	31	19		" "
163	140	♂+	337	152	185	14	30	19		" "
164	116	♀+	342	164	178	13	30	18		" "
165	118	♂+	343	164	179	14	32	18		" "
166	98	♂+	327	151	176	14	30	18		" "
167	129	♂+	296	111(+)	185	14	31	19		" "

	BW	SEX	TL	T	HB	FF	HF	E.
✓	15 168	118	♂+	340	160	180	14	31 19
✓	169	102	♀+	339	164	175	14	31 19
✓	170	116	♀-	279	145	154	$\frac{14}{14}$	31 17
✓	171	97	♀±	288	121	127	18	28 16.5
✓	172	274	♂+	483	255	228	27	48 22
✓	173	115	♀+	337	160	177	13	30 18
✓	174	184	♀+	406	190 ⁺	216	16	40 23
✓	175	294	♀+	519	287	232	20	46 23
✓	176	295	♀+	481	242	239	23	48 21
✓	177	148	♂-	419	231	188	18	44 21
✓	178	116	♂+	349	170	179	13	31 17

R. tamaricus Asp.
Kg. Palau South 3

R. mulleri
"

(2)
R. fromanicus Asp.
Kg. Wias. 14.
(胎児左石右石)
R. annifer ? *R. nagata*
(胎児右石左石)

R. mulleri
"

R. mulleri
"

R. muelseri (♂)
"

(?)
Ratt. tamaricus
Kg. Betes 9

	SN	SEX	TL	T	HB	FF	HF	E	
15	177	♂+	314	144	170	213 ¹³	30	17	③ <i>R. frontonius</i> Aug. 13 Kg. Butis
16	180	♂+	273	139	134	10	24	16	③ <i>R. frontonius</i> <i>R. exulans</i>
17	181	♀-	193	72	121	10	19	10	Sunkus
18	182	♀-	397	187	210	28	48	18	# <i>Collocaeras</i> c.
19	183								<i>R. frontonius</i> AB (1/2)
20	184								<i>Collocaeras</i> c. "
21	185								<i>F. glab.</i> "
22	186	♂+	378	194 ⁺	184	14	35	20.5	<i>R. frontonius</i> INSTR? 兩隻. 15. Aug.
23	187								
24	188								
25	189								

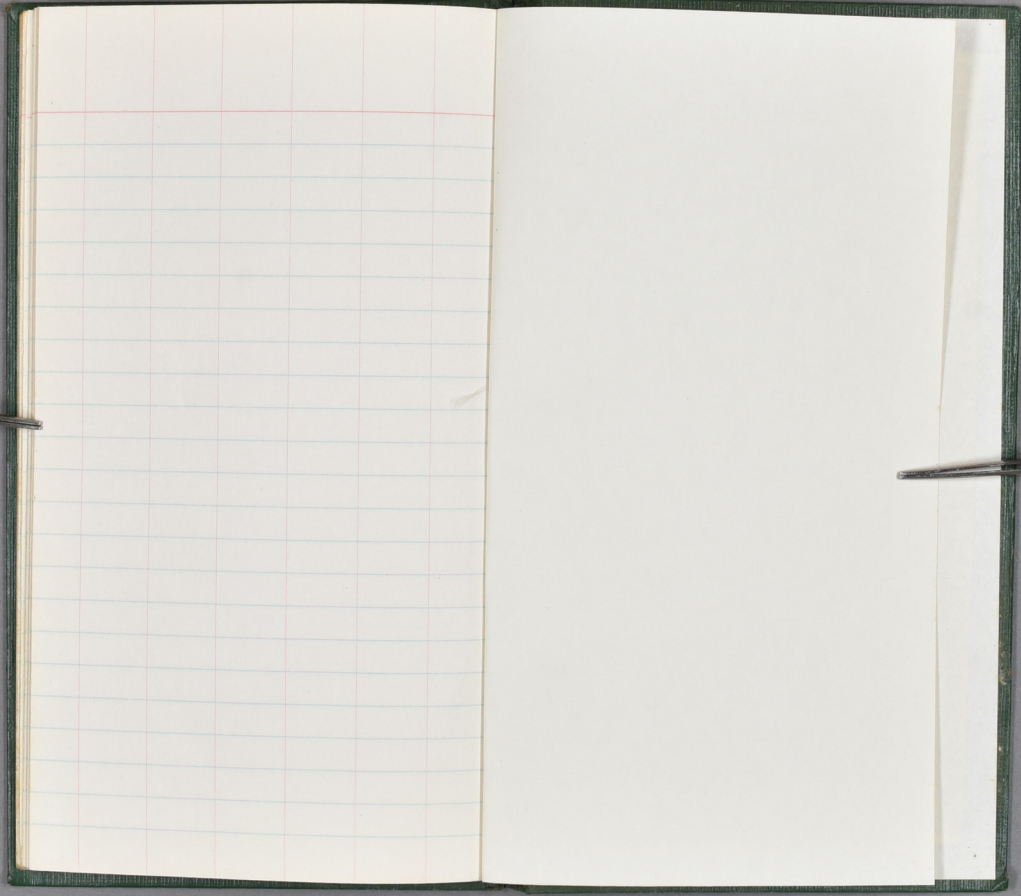
金少? 疏.

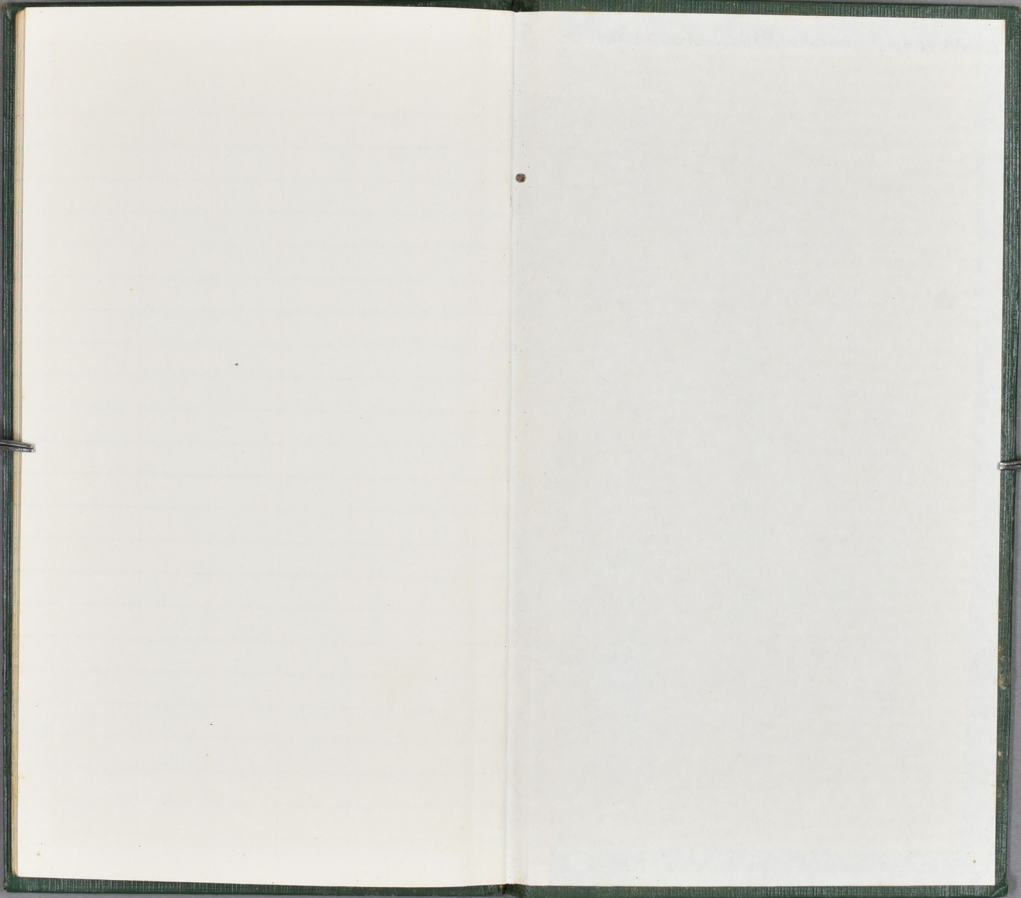
測定 + 3" skull 5/1.

測定 + 固定.

(喬座? 24. 拾(天)

186' ~ 以下江. 測定中.





KOKUYO

㊦-㊧