

LEVEL BOOK

THAI

No. 4 (計四冊)

1982, Jul.

Aug.

1982

NO	Sex	BW	TL	T	HB	FF	HF	IE	
500	♀+	345	597	339		23	49	31	Wang-Takerae <i>R. satanus</i>
501	♂+	205	415	209	206	16.5	31.5	24.5	<i>R. rattus</i>
502	♀+	170	348	155(+)	193	17	33	24	<i>R. rattus</i>
503	♂-	121	361	184		12.5	40	23	<i>R. surifer</i>
504	♂	175	387	193		16.5	39	24	"
505	♂-	160	384	192		17	39	24	"
506	♀	175	385	187		17	38	25	"
507	♂+	198	310	100(+)		17	39	24	"
508	♀	101	329	165		16	36	23	"
509	♀-	111	263	94(+)		16	37	23	"
510	♀	99	202	154		17	36	25	"
511	♂-	106	286	121(+)		17	37	22.5	"
512	♂	97	295	152	143	15	32	22	<i>R. rattus</i>
513	♀-	160	320	135(+)		16.5	38	25.5	<i>R. surifer</i>
514	♀	113	336	172		18	37	22.5	"
515	♀	166.5	384	191		17	38	24	"
516	♀+	186	405	203		17	39	27	" 全身
517	♀	130	337	171		16	37	24	"
518	♀+	147	327	130+		16	36	24.5	"
519	♂-	122	310	133(+)		16	39	23	"
520	♀+	156	386	194	192	15.5	33	22	<i>R. rattus</i> Man 2+3
521	♂+	296	399	187	212	18	40	25	<i>R. berdmorei</i>

No	Sex	BW	TL	T	HB	FA	HF	E		
522	♀	185	356	162	194	19	37	24	<i>B. savilei</i>	Foot. R3L5
523	♀+	250	400	189	211	18	38	24	"	PS R5 L4 man 373
524	♀	215	347	157	190	17	38	25	"	
525	♂+	290	404	184	220	18	36	24	"	
526	♂	295	392	170	222	19	38	24	"	
527	♀+	266	404	194	210	18	39	24.5	"	
528	♂-	245	381	163	218	18	39	23	"	
529	♀-	132	366	182	184	25	43	16	<i>T. glis</i>	
530	♂	176	400	202		26	46.5	12.5	"	
531	♀	265	282	81		24	44	18.5	<i>M. berdmorei</i>	Foot R2 L2
532	♀	174	333	145		24	44	18	"	
533	♂	125	349	192	157	17	36	24.5	<i>R. rattus</i>	July 24 '82
534	♂+	190	401	216	185	17	36	23	"	
535	♂+	95	316	164	152	14.5	34.5	21	"	
536	♂+	320	404	180	224	23	41	24	<i>R. berdmorei</i>	
537	♂+	325	434	198	236	19	40.5	26	"	
538	♀	235	359	162	197	19	37	24	<i>B. savilei</i>	
539	♂	403	451	202	249	19.5	41	25	"	
540	♀	165	374	186		18	38	24	<i>R. swifer</i>	
541	♀	105	304	152		17	35	22.5	"	
542	♀-	158	367	170		16	38	25	"	
543	♂-	112	330	162		16	38.5	23	"	

No	Sex	BW	TL	T	H13	FA	HF	IE	
544	♀	125	346	178		17	39	23	<i>R. surifer</i>
545	♂	87	307	154		15.5	35.5	22	"
546	♀	180	380	184		25	43	17.5	<i>T. glis</i>
547	♀+	230	381	176		18.5	37	25	<i>R. berdmorei</i> July 25 '82
548	♀	175	336	161		17	34	22.5	"
549	♂+	260	400	187		18	38	25	"
550	♂	1045	358	194	164	14	33	21	<i>R. rattus</i>
551	♀+	128	379	204	175	15.5	32.5	19.5	" Foot. R2L3
552	♀	106	364	192	172	16	36	23	"
553	♂+	136	370	194	176	16	35	23	"
554	♂	810	560	273	287	27	56	30	<i>B. indica</i>
555	♀	104	333	52+		17	32	24	<i>R. surifer</i>
556	♀	182	330	169		16	38	23	"
557	♀	100	306	151		16	38	23	"
558	♂-	121	318	149(+)	169	16.5	38	22	"
559	♀	75	278	140	138	16	36	22	"
560	♂+	160	395	203		17	40	23	"
561	♀	102	334	164		17	37	22	"
562	♂±	166	300	102(+)	198	16.5	38.5	25	"
563	♀-	102	332	168		16	38	24	"
564	♀	120	269	106(+)		16	37	23	"
565	♂-	119	213	38(+)		16	38	23	"

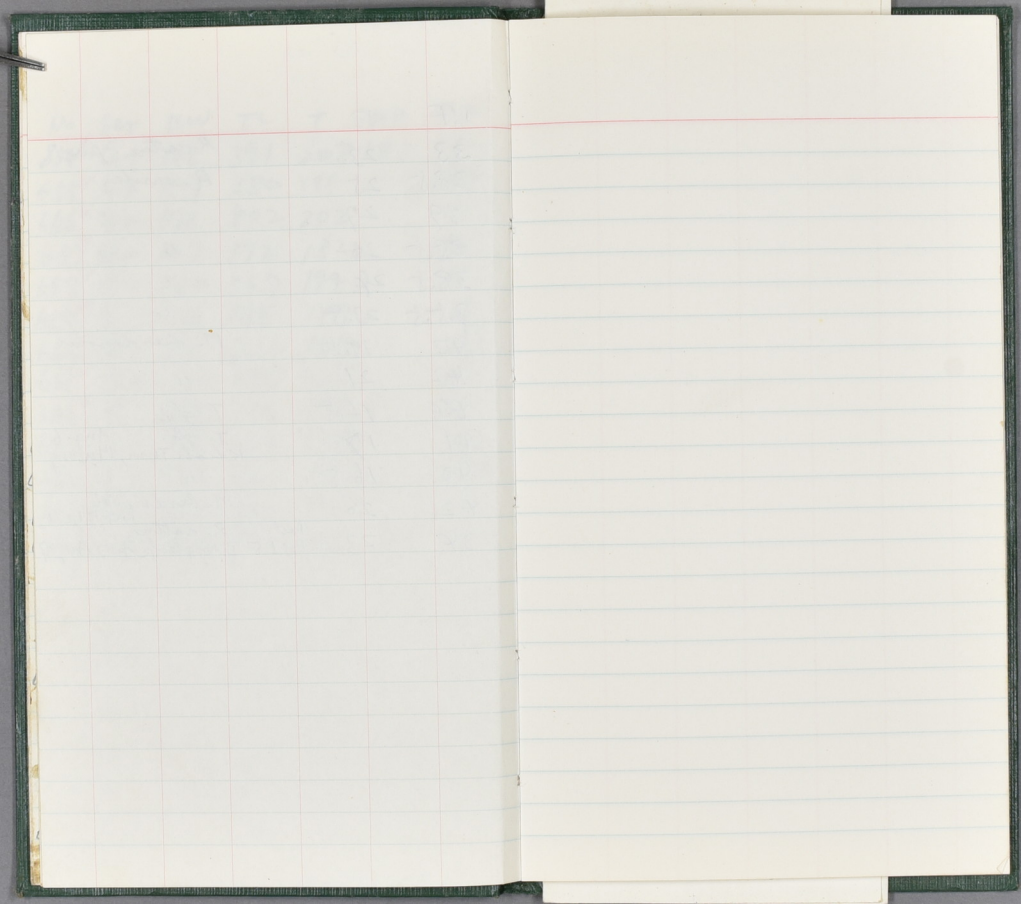
No	Sex	BW	TL	T	HB	FF	HF	E			
5366	♀	105	210	158		17	86	22.5			<i>R. swifer</i> July 25
5367	♀+	240	601	350		23	49	30			F&T R3 L2 <i>R. sabanus</i> July 26
5368	♂+	235	320	116(+)		18	39	24.5			<i>R. berdmorei</i>
5369	♂+	65	287	151	136	14	31	19			<i>R. rattus</i>
5370	♀	190	376	190		19	40	26			<i>R. swifer</i>
5371	♂+	183	382	194		17	39.5	26			"
5372	♂+	168	387	183		16	38	25			"
5373	♀	170	369	181		17	37	25			"
5374	♀-	198	392	187		17.5	40	25			F&T, R2, L2
5375	♀	110	317	162		17	37	23			"
5376	♂-	122	350	172		16	37.5	25			"
5377	♀	175	391	193		16	39	25			"
5378	♂-	155	345	156(+)		17	39	25			"
5379	♀	100	322	163		17	38	26			"
5380	♂-	142	381	189		16	39	24			"
5381	♀	110	316	161		16	37	24			"
5382	♂1	242	380	158-222		20	38.5	23			<i>R. berdmorei</i> July 27 '82
5383	♂	250	370	175-195		21	39	22			<i>R. savilei</i>
5384	♂	135	354	175		16.5	36.5	22			<i>R. swifer</i>
5385	♂	94	310	156		17	36.5	24			"
5386	♂+	92	340	185		13.5	29.5	20			<i>R. fulvescens</i> July 28
5387	♀	110	312	156		16	37	23			<i>R. swifer</i>

No	Sex	BW	TL	TB	HB	FA	HF	E		
588	♂+	133	365	185		16.5	38	23.5	R. surifer	Jul 28
589	♀	105	313	158		16	36	22		
590	♀	100	335	169		15.5	36	23		
591	♀	135	324	150+		14	41	24		
592	♂-	138	350	176		17	39	25		
593	♀	170	255	68+		14	36	25		
594	♂-	125	258	182		17	39	24		
595	♀	110	271	118+		16	37	23.5		
596	♂-	180	406	205		17.5	40	24		
597	♀	130	350	178		14	37	22		
598	♂-	144	217	31(+)		17	39	24		
599	♂-	126	350	183		16.5	39	23.5		
600	♀	110	345	174		17	39	24		
601	♀	160	357	146		17	38	24		
602	♀-	101	231	165(+)		15.5	36	23.5		
603	♀	110	272	116(+)		17	36	24		
604	♀	163	364	174		16	37	24.5		
605	♂	195	389	193		17	38	26		
606	♀-	134	268	83(+)		16.5	37	23.5		
607	♀-	153	378	180		16	37.5	23.5		
608	♀	120	338	173		18	37	23		
609	♂-	103	334	174		16	38	23		

No	Sex	BW	TL	T	HB	FF	HF	IS		
610	♀	125	312	158(+)		12	38	23	R. swirifer	Jul. 28 '82
611	♀	160	383	190		26	46	17.5	T. glis	"
612	♀	208	349	144		23	42	18	M. leardmorei	"
613	♂+	114	370	215		13.5	30	20	Kao Iai Nat. Park ^{guest house}	Aug. 1 '82
614	♂+	185	352	158(+)		17.5	40	25	R. swirifer	
615	♀+	181	378	192		24	42	16	T. glis	mamm. gl. + Lact. P&R, L1
616	♀+	178	358	184		24	42	16	"	Fact R1, L1
617	♀-	130	353	179		22.5	41	16	"	
618	♂	176	389	192		24	44.5	17.5	"	
619	♀+	182	370	190		16	37.5	24	R. swirifer	^{Golf course} Fact R2 L3 Aug. 2 '82
620	♀-	163	328	163		16	36.5	24	"	
621	♂-	106	234	169		16.5	38	23	"	
622	♀-	98	339	174		16	37	22	"	
623	♀-	114	349	179		16	38	24	"	
624	♂+	126	343	193		16.5	37	24	"	
625	♂+	58	153	24	129	15.5	26	17	Hylomys sulcis	Khao Kiew 4 1/2 Aug 3 '82
626	♂+	203	444	234	210	18	36.5	22.5	R. hastatus ^{selatensis}	Khao Kiew 4 1/2
627	♂+	80	214	70(+)		13	29	21.5	R. fulvescens	Khao Kiew 4 1/2 "
628	♀+	87	338	190		13	28.5	21	"	Fact R1 L4
629	♂-	51	254	130		14	32	20	R. swirifer	Khao Kiew 4 1/2
630	♀+	83	327	178		12.5	27.5	20	R. fulvescens	Khao Khiao 4 1/2 Fact R3 L2
631	♂±	53	291	158	133	12	28	21	"	Khao Khiao 4 1/2 "

Lat 100° 48'
 Long 14° 47'

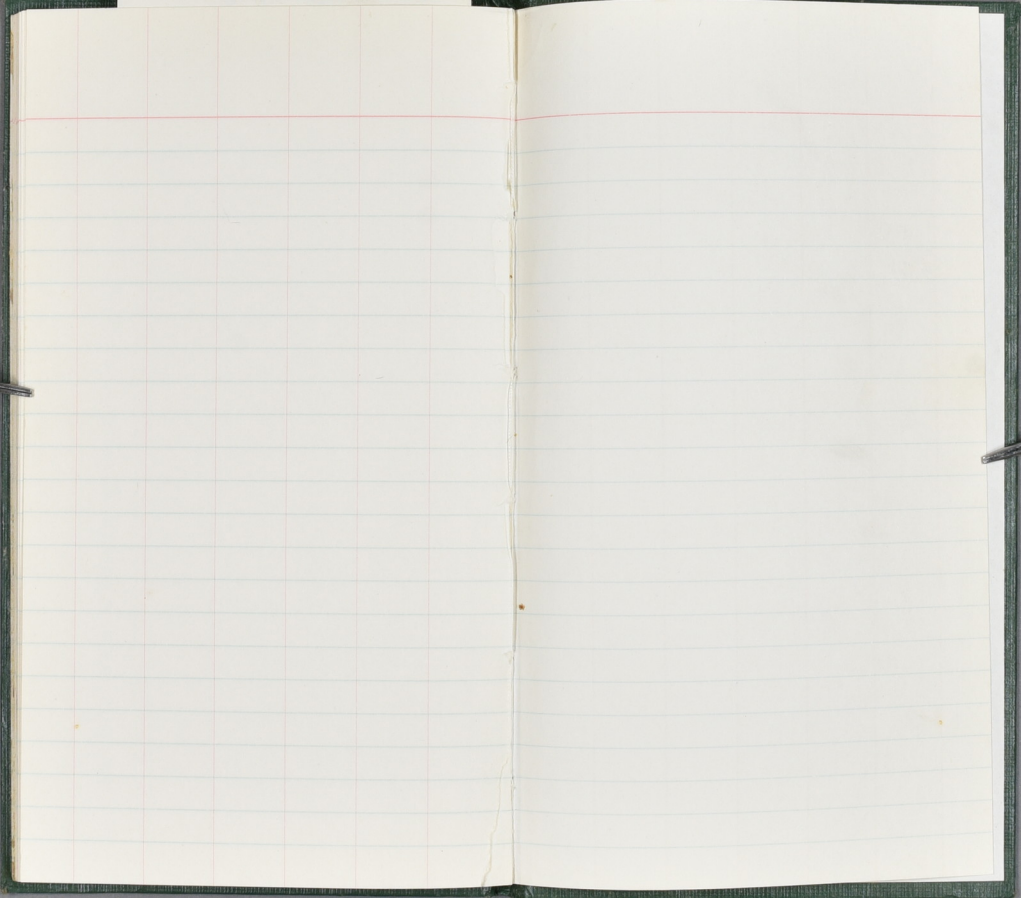
sex	BW	TL	T	HB	FP	HP	LE	
632 ✓ ♂+	123	368	196	172	15.5	33	20	R. boratensis rathus Khao Khieo U T2
633 ✓ ♀+	141	394	210	184	16	33	23	"
634 ✓ ♂±	99	335	181	154	15	33	21	Khao Khieo U T2
635 ✓ ♂+	152	370	183		20	42	17	T. glia Khao Khieo de T2
636 ✓ ♀-	132	359	182		24	44	17.5	" Khao Khieo U T2
637 ✓ ♂+	70	241	104(+)		12.5	25	20	R. himpoo Khok Tum, Muang Aug 6
638 ✓ ♀+	158	369	189		16	32.5	25	R. surifer " Foot R1 L1+2
639 ✓ ♂+	129	387	216	171	16	32	21	R. rathus
640 ✓ ♀+	185	410	220	190	17	36.5	23	" man 2+3
641 ✓ ♂+	147	372	194	178	15	32.5	23	"
642 ✓ ♀+	135	364	196	168	14.5	31	24	" man 2+3
643 ✓ ♂+	103	352	192		13.3	29.5	22	R. fulvescens came T 307 Khok Koi Aug 7
644 ✓ ♀+	363	611	360		22.5	46.5	30	R. sabanus came 15 " Man 22 c.
645 ✓ ♀+	413	625	369		23	48	31	" came T " Foot R 2 L 2
646 ✓ ♂-	160	478	285		20	45.5	28	"
647 ✓ ♀+	69	284	142		12	25	20	R. himpoo came T " man 2+2 " Foot R 2 L 2
648 ✓ ♀+	51	178	45(+)		12	25.5	18	" man 2+2
649 ✓ ♂+	66	205	67(+)		12	26.2	20	"
650 ✓ ♀+	43	250	128		11.5	25.2	18	" Foot R 1 L 1
651 ✓ ♂+	47	250	131		11.6	25	19	"
652 ✓ ♀+	105	367	200	167	14.5	31	21	R. rathus
653 ✓ ♂+	126	316	136+	180	15	32	22	"





41 1982 5월 27일

No.	Sex	Bw	TL	T	HB	FF	HF	E			
(6692) 667	♂+	128	343	180	163	19	35	23	R. rattus	820810	(Maha Sarakoh) 211 770-2
(6693) 668	♂+	108	355	178	177	16	32	23	:	820810	211 770-2
(6694) 669	♂+	121	335	165	175	30	21.8		R. rattus	820811	(Sahas Khan) (Karasin)
(6695) 670	♀	90	313	163	15	31	20		R. rattus	820811	?
(6696) 671	♂+	160	307	151+	16	34	24		?	820811	?
(6697) 672	♂+	138	355	182	14	33	23		?	820811	?
(6698) 673	♂+	180	352	161	17	38	25		R. norvegicus	820811	?
(6699) 674	♀	137	380	198	17	32	22		R. rattus	820811	?(Lam Pau Dam)





$$\begin{array}{r} 246 \\ 234 \\ \hline 210 \end{array}$$



1973

1A-7