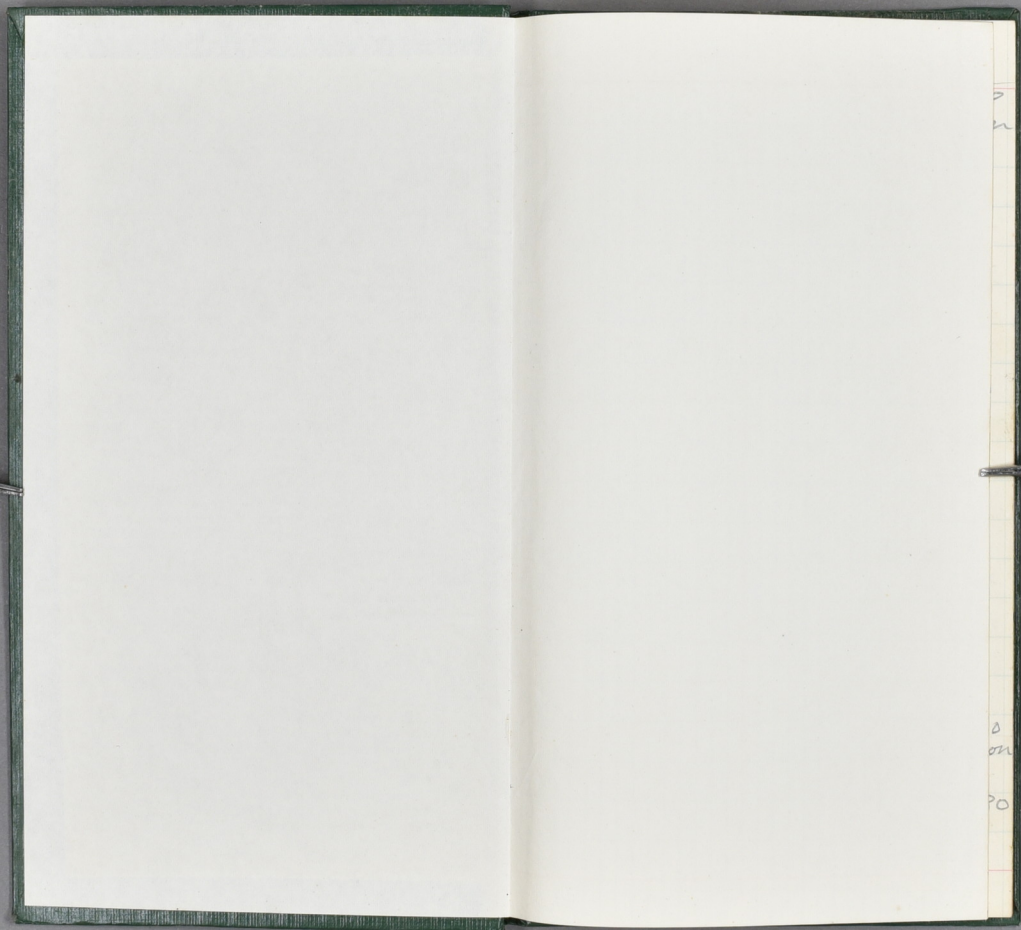


TRANSIT BOOK

THAI

No. 3 計測データ

Aug. 1980



'80

phon

'80

phon

'80

	BW	TL	HB	T	FF	HF	E	Sex	Locality	Date
301	190	421	218	203	20.5	43	25	♂+cpt	Banna, ^{30km} W. Chumplion	Aug. 9 '80
									<i>R. surifer</i>	"
302	155	416	200	216	18	43	22	♂+cpt	"	"
									<i>R. surifer</i>	"
303	160	398	189	209	17.5	39.5	24	♂+cpt	"	"
									<i>R. surifer</i>	"
304	285	568	226	342	23.5	46	27	♀+	<i>R. sabanus</i>	"
									"	"
305	140	344	169	175	15.5	33	21	♂+cpt	<i>R. rattus</i>	"
									<i>R. rattus</i>	"
306	105	336	166	170	15.5	33.5	21	♂+ept	"	"
									<i>R. fulvescens</i>	"
307	85	295	151	144(+)	14	28.8	19	♂+	"	"
									<i>R. surifer</i> (30)	"
308	79	292	144	148	17.5	35.5	21.5	♂-	"	"
									<i>Tupia glis</i>	"
309	173	370	186	184	24.5	43	16	♂+	"	"
									"	"
310	160	366	188	178	25	43	16	♂+	"	"
									"	"
311	158	365	185	180	24	42	16	♀-	"	"
									"	"
312	155	360	185	175	24.5	42	16.5	♀-	"	"
									"	"
313	170	385	191	194	17.5	39.5	23.5	♀+	<i>R. surifer</i> , Aug. 10	"
									"	"
314	230	418	212	206	18	39.5	24	♀+	"	"
									"	"
315	150	369	188	181	24	41.5	16	♂+	<i>Tupia</i>	"
									"	"
316	155	406	206	200	17	41	24	♂+	<i>R. surifer</i> , Aug. 11 '80	"
									20km W. Chumplion	"
317	75	314	146	168	12.5	28	19	♂+	<i>R. fulvescens?</i>	"
									"	"
318	530	543	267	276	23	50	23.5	♂+	<i>Bombita taenioides</i> , Aug. 12 '80	"
									<i>Rattus mülleri</i>	"
319	220	305	188	117	23.5	42	20	♀	<i>Menetes berdmorei</i>	"

test 22 ep +

test 24

test 25 ep +

test 13 ep ±

test 7 ep -

test 14 ep -

man 0+2+0 fact.

man 1+2+0 fact R1 L2

Ps R0 L3 $\frac{1}{2}$

Ps $\frac{1}{2}$ fact. R-3 L0

test .11 ep -

man 0+2+1 fact R2 L1

	BW	TL	HB	T	FF	HF	E	sex	
320	358	611	255	356	24	48	29	♂+	15Km W. Chumphon 天竺村 R. sabanus Aug. 13 '80
321	248	558	218	340	21.5	45.5	25.5	♀+	" "
322	170	375	186	189	16	34	22	♂+	R. rattus "
323	163	398	196	202	18	41.5	23	♂+	R. surifer "
324	160	246	196	50(+)	17	39	23	♀+	" "
325	93	297	159	138(+)	17	38	20	♂-	" "
326	122	373	178	195	17	39	21.5	♂-	" "
327	64	279	141	138	15.5	35.5	20.5	♀-(sp)	" "
328	140	325	177	148(+)	16.5	38.5	21	♀+	" "
329	142	345	176	169	24	42	17	♂+	Tupia glis "
330	163	358	178	180	24	41	16	♀-	" "
331	166	377	185	192	17	34.5	21	♂+	R. rattus 果樹園内
332	4.5	62.5	49.0	13.5	4.5	7.2	13.5	Tibia 17 Tragus 3	♂ 洞穴
333	4.5	65	52.0	13	4.5	7.5	13.6	Tibia 17.3 Tragus 3	♂ "
334	193	398	196	202	16.5	37.5	23	♂+	R. rattus " 天竺村
335	157	395	183	212	17.5	40.5	22.5	♂+	R. surifer Aug. 14 '80
336	64	284	144	180	15	35.5	20	♀-(sp)	" "
337	154	375	192	183	26	44	16.5	♀-	Tupia "
338	117	355	176	199	23	39.5	16.5	♀-	" "
339	117	352	176	176	25	43	15	♂-	" "

test 32 spf

Man. 2+0+2

Man 2+0+2 fact R1 L3

fact R2 L2

fact. R.1 L.1

	BW	TL	HR	T	FF	HF	E	sex		
340	170	383		187	26	44	19	♂	Tupia	♀♂♂ (♀) Aug. 14 '80
341	138	382	178	204	15	33	23	♀+	R. rattus	Khon Kaen, Village, Aug 19
342	160	363	185	198+	16	33	23	♀+	"	"
343	152	378	179	199	14	30.5	22	♀+	"	Dam site, Aug 20 Khon Kaen
344	88	344	165	179	15	32	21.8	♀+	"	"
345	95	316		160	15	35.5	23.5	♂-	(R. surifer)	"
346	123	367		188	16	39	25	♂♀	R. rattus R. agriker	"
347	123	348		192	15.5	37.5	24	♀-	"	"
348	158	377		191	25.5	43.5	17	♀-	Tupia glis	"
349	115	357		186	16	37.5	24	♀-	R. surifer	" Aug. 21 '80
350	117	244		74(+)	15.5	36.5	24	♀-	"	"
351	126	214		40(+)	16	36.5	24	♀-	"	"
352	670	579	303	296	28	53	30	♂±	B. indica	"
353	66	275	140	135	14.5	30.5	20	♀±	sp- R. rattus?	Phuket 74 (♀) Aug. 26 '80
354	230	530	217	313	22.5	45	27.5	♂-	B. salanus	water fall Aug. 27 '80
355	260	530	224	306	20	41	27.5	♀+	"	man 2+0+2
356	145	446		262	19	39	25	♂-	"	"
357	210	514		307	20	43.5	25	♂-	"	"
358	205	502		294	19	40	24.5	♀-	"	"
359	247	536		317	20.5	43.5	28	♀+	"	man 2+0+2

fact R.3 L3

fact R.4 L0

man 2+0+3 R3 L2

Man 2+0+3

sabanus 11, Korea 9

surifer 21

	BW	TL	HB	T	FF	HF	IE	MP		
360	123	425		247	19	38.5	25	B-	R. sabanus	天竺林 Water fall Aug. 27 '80
361	333	569		330	23	45	29	B+	"	"
362	185	489	193	296	20	42.5	26.5	B-	" (no skin)	"
3	167	294		107(4)	20	41	25	B-	"	"
4	85	308	156	154	15.5	32.0	20	B-	R. lozea? rattus	"
365	53	262	131	131	14.5	31	18	B-	"	"
6	116	330	170	160	16.5	33	19	♀+	man "2+0+3	"
7	138	339	171	168	16	33	19	B+	nest 23 sp+	"
8	100	316	158	158	15.5	32.5	19	B-	"	"
9	108	318	165	153	16	32.5	19	♀+	man "2+0+3	"
370	135	360	184	186	16.5	35	20	B+	"	"
71	45	288	123	125	14	29	17	B-	"	"
72	53.5	270	130	140	14	30.5	18	B-	R. rather (chest 肉 粹)	"
73	66	316		132(4)	15.5	36	23.5	♀-	R. surifer	天竺林
74	132	338		164	15.5	35.5	23	B±	"	"
75	147	339		156	15.5	35	24	B+ sp-	"	"
76	124	336		163	15.5	36	21	B- sp-	"	"
77	120	346		175	16	36	21.5	B+ sp-	"	"
78	133	267		82(4)	15.5	36	23	B+ sp-	"	"
79	146	356		173	16.5	37	24	B+ sp+	"	"

test 30 ept

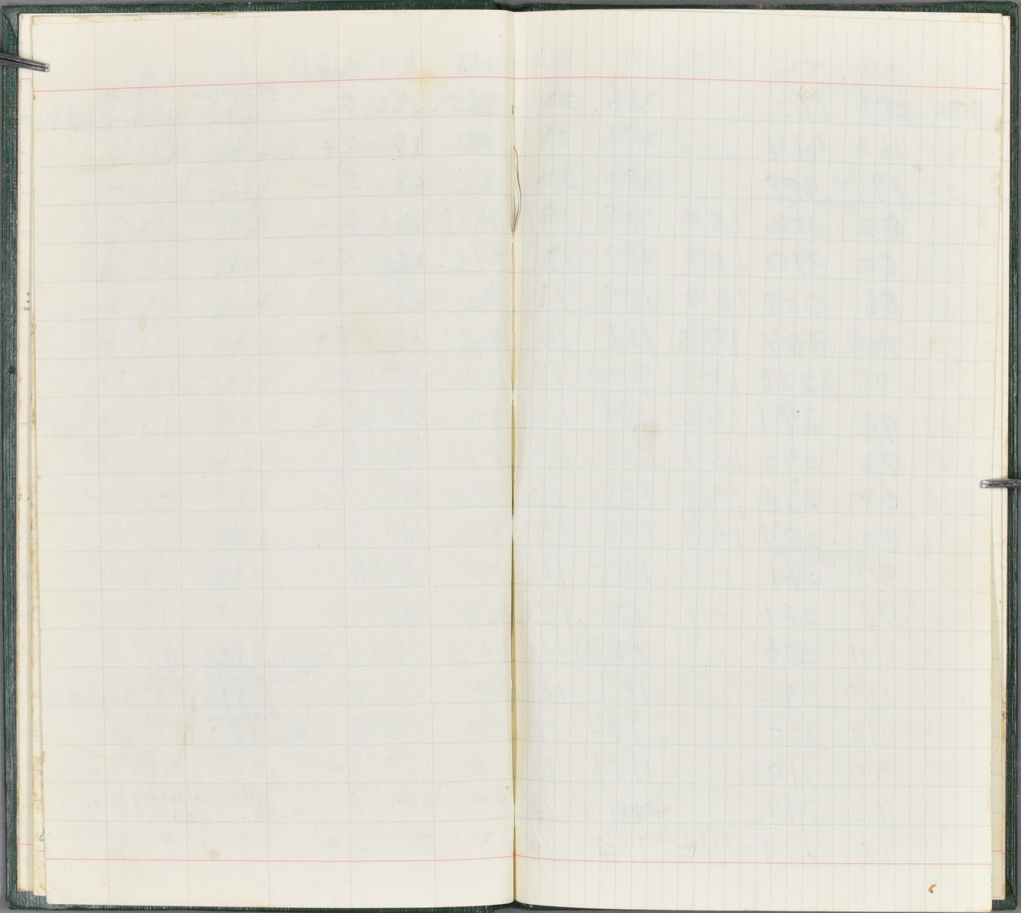
3

3

	PW	TL	HL	T	FF	HF	E	Sex		
380	146	357	190	167	16.5	36.5	25	♂+	<i>R. swifer</i>	天竺桂 Aug. 27 '80
81	66	168	147	21	15.5	23	16.5	♀+	<i>Hylomys silus</i>	"
82	121	316		132(+)	16.5	36.5	23	♀+	<i>R. swifer</i>	"
83	120	312		134(+)	15.5	34	23	♂+	"	"
84	102	335		163	15.5	35	22	♀-	"	"
3 85	73	295		148	15.5	35.5	22	♀-	"	"
86	70	307	151	156	15.5	35.5	22	♂-	(no skin)	"
87	75	264		110(+)	14.5	34.5	22.5	♀-	"	"
88	78	312		157	15.5	37.5	23	♂-	"	"
389	66	300		149	14.5	36.5	22	♂-	"	"
3 90	76	307		153	15.5	36.5	21	♀-	"	"
91	102	340		162	15.5	36.5	25	♂-	"	"
92	71	292		141	15.5	34.5	23	♀-	"	"
93	89	331		171	16	37.5	22	♂-	"	"
94	97	338		166	15.5	35	22	♀-	"	"
95	83	361		206	17	36.5	24	♂-	<i>R. sabanus</i>	"
96	78	296	152	144	14.5	31	19	♀+	<i>R. lossa rattus</i>	"
97	218	326		137	24	43	20	♂+	mam 2+0+3 <i>Menetes</i>	"
98	225	330	164	136	24	42	19.5	♂+	(no skin)	"
99	175	225		48(+)	25	42.5	20	♀-	"	"

fact R2L3

	BW	TL	HB	T	FF	HFI	E	Sex	Menete	天竺井
400	183	329		130	23.5	41.5	18	♀-		Aug. 27 '80
1	170	305		128	23	40	17	♂+ sp-	"	"
2	170	309		123	22.5	41	19	♀-	"	"
3	130	339		158	24.5	42.5	16	♂-	Tupia	"
4	118	340		162	20	41	16	♂-	"	"
5	120	311		139	23.5	41	15	♂-	"	"
6	119	340		159	24.5	43	17	♀-	"	"
7	136	339		157	25	43	15	♂	"	"
8	130	331		146	23.5	41	17	♀-	"	"
9	118	340		168	25	43	15	♂-	"	"
410	130	341		156	23.5	42.5	16	♀-	"	"
11	134	334		156	25	42	16	♂-	"	"
12	136	330		149	25	42	15	♀-	"	"
13	119	330		153	20	42	10	♂-	"	"
14	123	341	181	160	26	43.5	15	♂-	(no skin)	"
415	248	449	216	233	34	54	20	♂-	Sundacurus 12 hippurus	Aug 28 '80
16	385	473	252	221	33	54	20	♀-	(no skin) " "	"
17	138	371	184	187	32	51	17	♂-	man ot + 1	"
18	237	534		319	21	43	27	♀-	R. sabanus man- 2E0+2	"
419	240	529		304	21	43	27	♀+	"	"



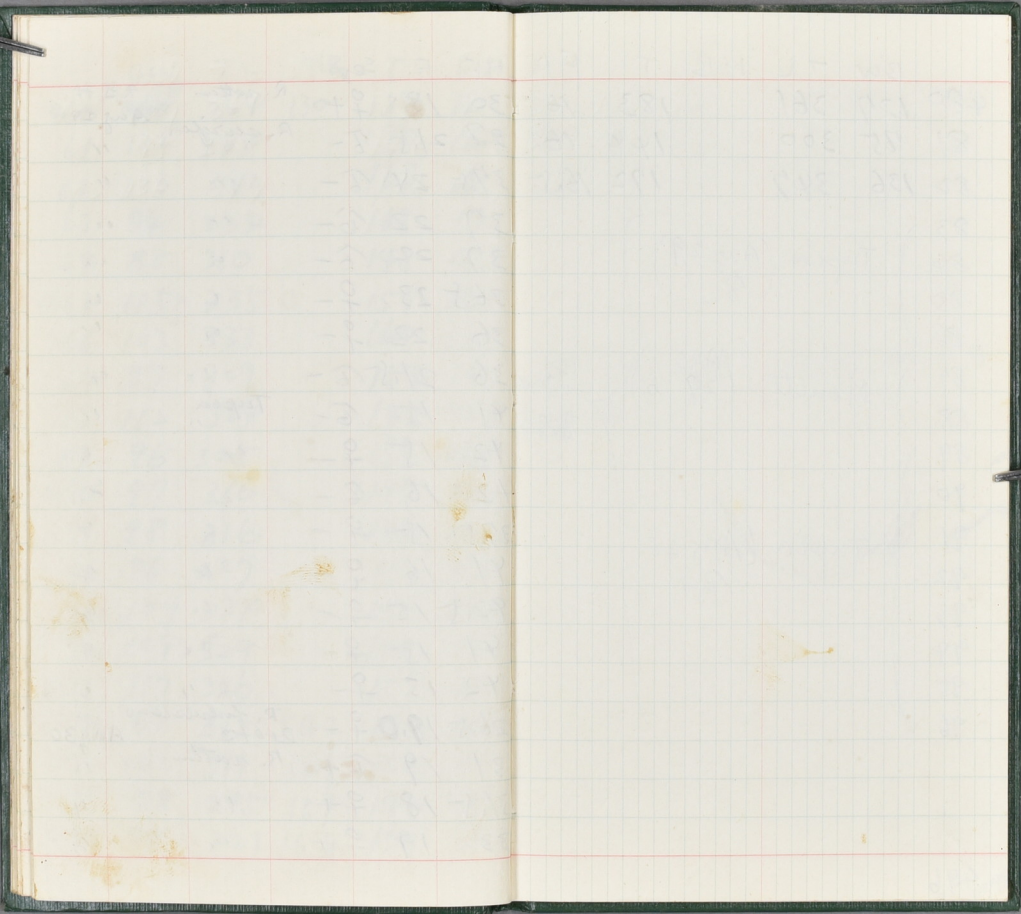
	BW	TL	HB	T	FF	HF	E	sex	
420	256	562		336	22	49.5	26	♀	<i>R. sabanus</i> Aug 28 '80
21	163	464		271	21	43	27	♂-	" "
22	175	488		282	22	44.5	26.5	♂-	" "
23	82	303	1.55	148	15.5	32	17	♀+	<i>R. lossa rattus</i> mean 2+0+3 "
24	80	310	1.59	151	15	30.5	19	♀+	" "
4 25	86	308	1.50	158	15	33	17.5	♂+	" "
26	108	334	173	161	16	33	20	♀±	mean 2+0+2 "
27	77	225	1.52	73(4)	15	33	20	♀+	" "
28	99	341	172	169	15.5	33	19	♀+	" "
29	72	299	1.51	148	14.5	32	18.5	♀-	" "
430	65	296	141	155	15	33	18.5	♂-	" "
31	70	289	147	142	14.5	31.5	18	♀-	" "
32	87	341		175	16	37	23	♀-	<i>R. surifer</i> "
33	73	301		150	15.5	36	22	♀-	" "
34	114	236		62(4)	16	35	24	♀-	" "
435	110	342		169	16.5	38	24	♀-	" "
36	72	300		146	15	34	22	♀-	" "
37	90	310		151	15	35	21.5	♂-	" "
38	92	274		11(4)	16	38.5	22	♂-	" "
439	148	359-176		183	16	33	20	♂+	<i>R. rattus</i> 家屋橋 Aug 28

fact 2

	BW	TL	HB	T	PF	HF	E	sex		
440	166	319		129	25	43	19	♂+	Menetes	7.15.74
41	162	331		141	24	43	18	♂+	"	Aug. 28 '80
42	150	314		124	28	40	17	♂+	"	"
43	143	319		133	24.5	42	18	♂+	"	"
44	154	328		141	24.5	44	19	♂+	"	"
445	160	298		115+	24.5	41.5	18	♂+	"	"
46	114	296		121	25	44	18	♀-	"	"
47	100	324		155	25	42.5	15	♂-	Tupia	"
48	102	323		148	25	42	16.5	♀.	"	"
49	100	324		155	25	43	15	♂	"	"
450	114	334		146	25	42	14	♂	"	"
51	96	319		147	24	41	15	♀	"	"
52	67	335	146	189	13.5	26.5	19	♀-	<i>R. fulvescens</i>	"
53	66	332	148	184	13	28	18	♀-	"	Aug 29 '80
54	38	286	118	168	12.5	26.0	17	♀-	"	"
455	244	538		317	22	46	26	♂-	<i>R. sabanus</i>	"
56	114	350	171	179	16	33	20	♂+	<i>R. rattus</i>	"
57	96	331	162	169	15.5	32	18	♀+	"	"
58	93	314	166	148	15	31	17	♀+	"	"
459	102 ⁵¹	270	134	136	15	31.5	18	♂-	"	"

man 2 + 0 + 2

	BW	TL	HR	T	FF	HF	F	Sex		
460	247 ⁵⁰	264	130	134	15	30	18	♀+	R. rattus	天竺#
61	132	344		170	16.5	37	21.5	♂-	R. swifer	Aug 29
62	106	342		169	16	37.5	24	♂-	"	"
63	84	334		169	17	37	22	♂-	"	"
64	85	310		148	16.5	37	22	♂-	"	"
465	115	335		155	15.5	36.5	23	♀-	"	"
66	103	333		160	15.5	36	23	♀-	"	"
67	87	309		153	16	36	21.5	♂-	"	"
68	112	324		142	23.5	41	15	♂-	Tupia	"
69	96	325		155	24.5	42	15	♀-	"	"
470	97	316		145	20	42	16	♂-	"	"
71	98	316		146	22	37.5	15	♀-	"	"
72	96	327		153	23	41	16	♀-	"	"
73	109	334		156	24.5	42.5	15	♀-	"	"
74	104	329		157	23	41	15	♀-	"	"
475	117	326		153	23	42	15	♀-	"	"
76	63	312	142	170	12.5	26.5	19.0	♀-	R. fulvescens 2+0+2	Aug 30
77	100	311	161	150	15	31	19	♂+	R. rattus	"
78	78	295	151	144	15	31.5	18	♀+	"	"
479	98	321	16.4	157	16	33	19	♀+	"	"



	BW	TL	HB	T	FF	HF	E	Sex		
480	127	361		183	16	36	22.5	G-	R. surfer	Aug 30
81	75	300		144	16	39.5	21	G-	"	"
82	136	347		172	16.5	37	23	G-	"	"

83

84

85

86

87

88

89

90

91

92

93

94

95

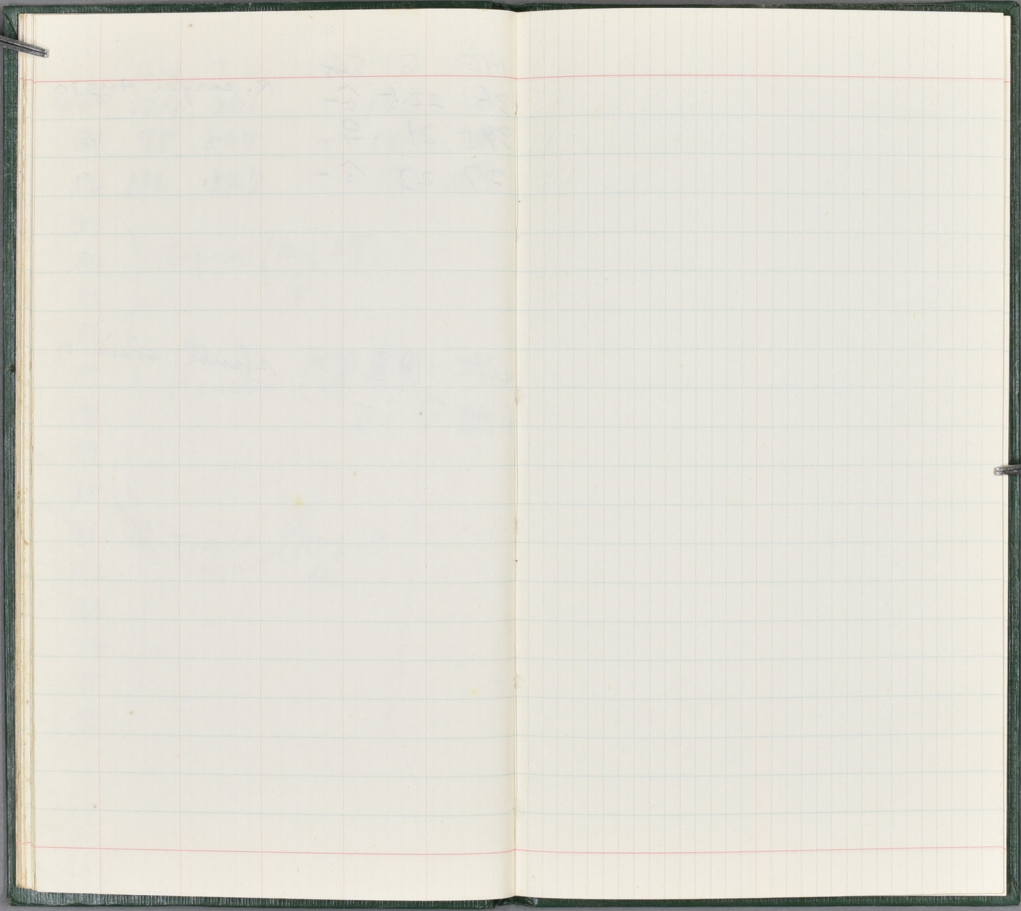
96

Tupia (Aug 29)
♂

Menetes (Aug 29)
♂

Tupia (Aug 28)
♂

Parasite 調査のみ skull, skin の
標本は作ら可









573 N18-17